



Mathews County Public Water Access Guide





Mathews County Public Water Access Guide

Table of Contents



Piankatank River & tributaries	3
Roane Point Landing	4
Warehouse Cove Landing	5
Piankatank River Landing	6
Roses Creek Landing	7
Milford Haven & tributaries	8
Grimstead Public Landing	9
Edwards Creek Landing	10
Whites Creek Landing	11
Chesapeake Bay & tributaries	12
Haven Beach (Festival Beach)	13
Aarons Beach	14
Bethel Beach	15
Old Mill Landing	16
Winter Harbor Landing	17
Horn Harbor Landing	18
Doctors Creek Landing	19
Mobjack Bay & tributaries	20
New Point Comfort	21
Davis Creek Landing	22
Williams Wharf	23
Town Point Landing	25
Put-in-Creek Park	26

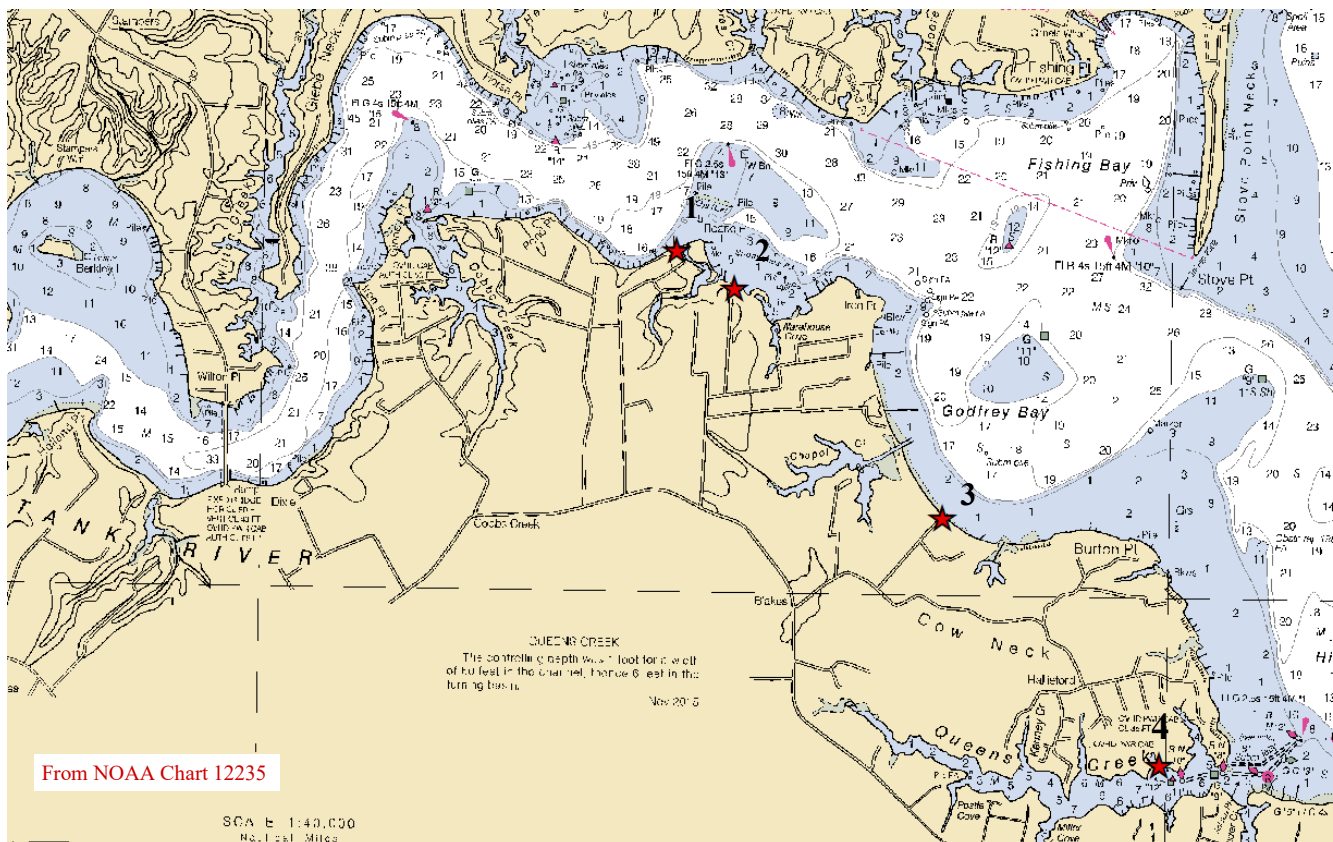


Mathews County Public Water Access Guide



Piankatank River Cobbs Creek, Queens Creek, Godfrey Bay, & Hills Bay

The Piankatank is a medium sized tidal river, approximately 1/2 mile to 1 mile across as it passes Mathews County. It drains a forested watershed known as Dragon Run. There is a navigation channel approximately 20-30 feet deep throughout the Mathews portion of the river, with shallower shoals fringing the shoreline. The river meets the Chesapeake Bay near Cherry Point on Gwynn's Island. The shoreline is steep at the western edge of the county near Holland Point, and gradually tapers to a lower elevation towards Gwynn's Island. Significant tributaries include Cobbs Creek & Queens Creek. There is also an entryway into Milford Haven. Public shoreline access points include Roane Point Landing, Warehouse Cove Landing, Piankatank River Landing, and Grimstead Landing. Private marina facilities are available in Cobbs Creek, Queens Creek, & Milford Haven. Channel depth in Cobbs Creek is approximately 8'; a pair of daymarkers indicate the entrance. Channel depth in Queens Creek is approximately 6-7'; the entrance is marked with several buoys. The Queens Creek entrance was dredged in December 2018. Channel depth through the Narrows into Milford Haven is approximately 15', but can be as shallow as 8' in some places. The channel is marked with a mix of daymarkers & lighted beacons.



**Roane Point Landing(1), Warehouse Cove Landing(2), Piankatank River
Landing(3), Rose's Creek Landing(4)**



Mathews County Public Water Access Guide

Roane Point Landing
1401 Roane Point Drive



Waterway: Piankatank River

Ownership: County of Mathews



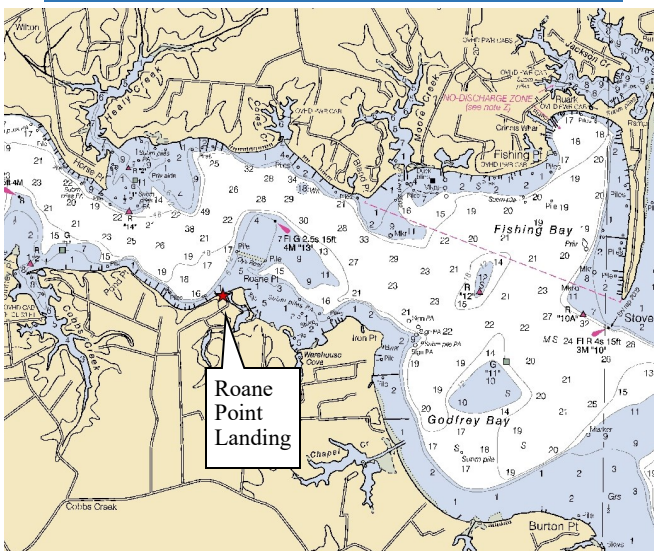
Directions: From Courthouse, go west on Route 198. Take a right on Roane Point Drive (Rte. 630). Follow to the very end, approx. 1.4 miles.

Amenities

- Gravel turnaround with parking for several cars & trailers
- Small gravel ramp for small skiffs, canoes, and kayaks
- Provides access to the Piankatank River

37. 3128703N

76.23 41928W





Mathews County Public Water Access Guide

Warehouse Cove Landing

1198 Chapel Lane



Waterway: Piankatank River

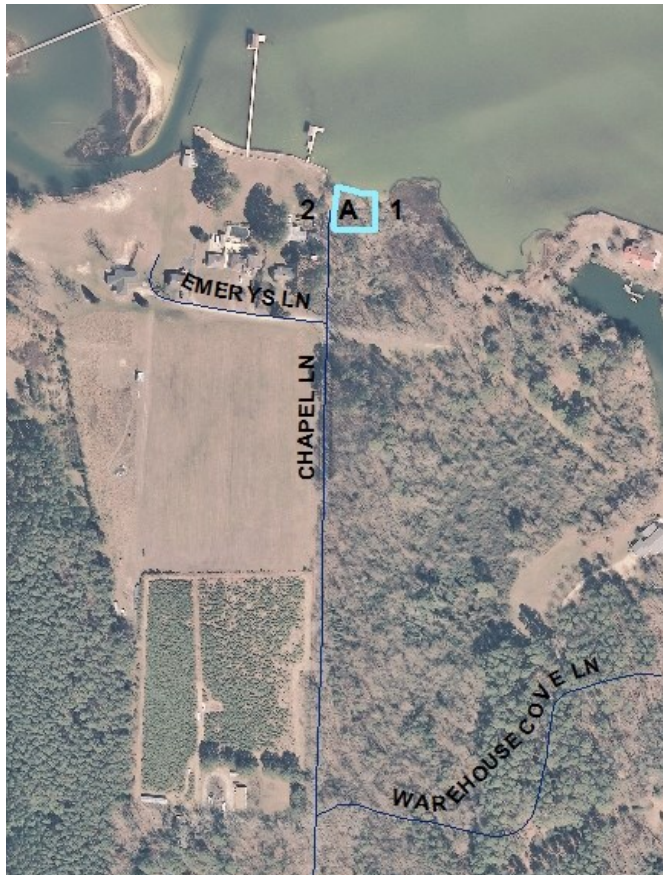
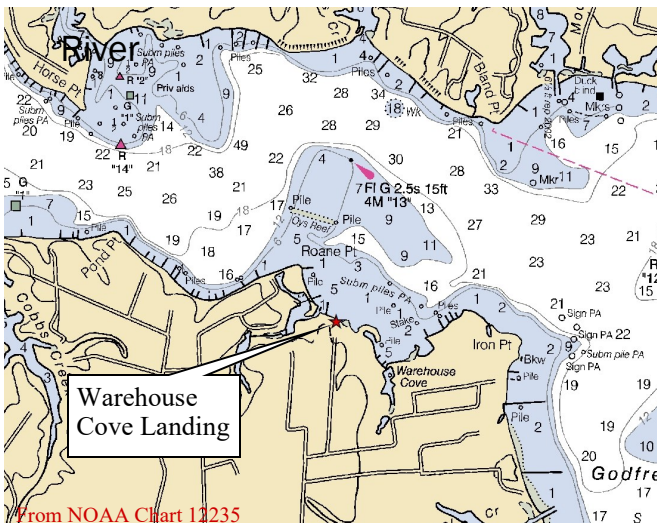
Ownership: County of Mathews

Directions: From Courthouse, go west on Route 198. Take a right on Chapel Lane (Rte. 631). Follow to the very end, approx. 1.2 miles.

Amenities

- small road ending with parking for 2 or 3 vehicles—tricky to access
- Sandy beach
- Launching for canoes, kayaks, and small hand craft only
- Provides access to the Piankatank

37.3120234N 76.2724332W





Mathews County Public Water Access Guide

Piankatank River Landing

400 Godfrey Bay Road



Waterway: Godfrey Bay & Piankatank River

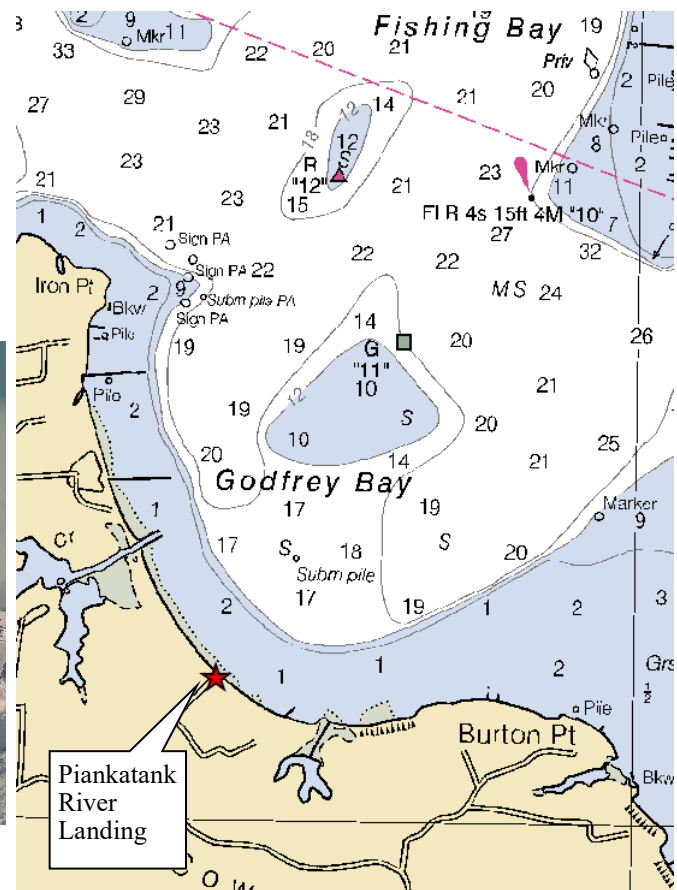
Ownership: County of Mathews
also known as "Hallieford Beach"

Directions: From Courthouse, go west on Route 198. Take a right on Hallieford Road (Rte. 626). Take a left onto Godfrey Bay Road (Rte. 888). Follow to end.

Amenities

- Gravel turnaround with parking for several cars
- Sandy beach
- Provides access to the Piankatank River

37.3019492N 76.2113726W





Mathews County Public Water Access Guide

Rose's Creek Landing 420 Old Matthews Lane



Waterway: Queens Creek

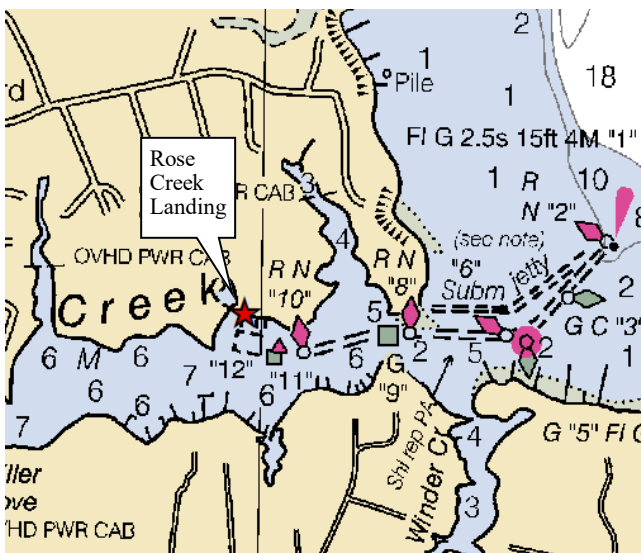
Ownership: County of Mathews

Amenities

- Gravel turnaround with parking for several cars & trailers
- Small gravel ramp for small skiffs, canoes, and kayaks
- Provides access to Queen's Creek and the Piankatank River
- Public pier

Directions: From Courthouse, go west on Route 198. Take a right on Hallieford Road (Rte. 626). Stay on Hallieford Road for approx. 2 miles, then take a right on Old Matthews Lane (Rte. 662) and follow to the end.

37.2917281N 76.2024W





Mathews County Public Water Access Guide

Milford Haven

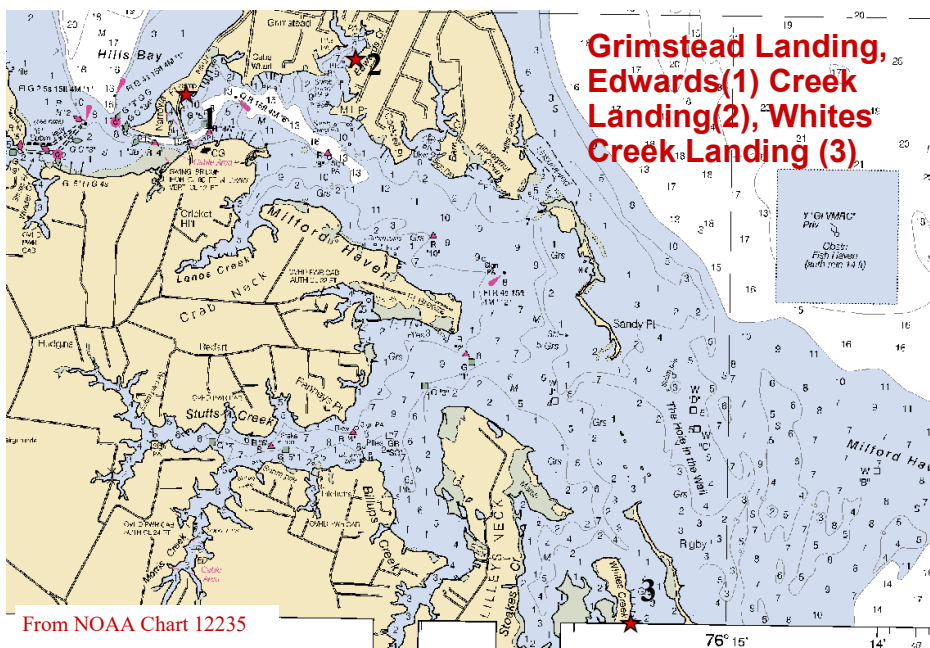
Edwards Creek, Barn Creeks,
Stutts Creek, Stoakes Creek, Billups Creek,
Lanes Creek, Wharf Creek, Hills Creek &
Whites Creeks



Milford Haven separates Gwynn's Island from the mainland of Mathews County. An opening at the western end through the Narrows leads into the Piankatank River. To the east is the Chesapeake Bay through an opening in the sandy barrier islands known as the Hole-in-the-Wall. Edwards Creek & Barn Creek reach to the north into the interior of Gwynn's Island. Several shallow creeks feed into Milford Haven from the south, including Stutts, Billups, Stoakes, and Whites Creeks. The Haven is approximately 1/2 mile wide, with a narrow channel carrying about 15' in the northwest end and 6-7' in the southeast. Shallow mudflats abut the channel. The shoreline is generally low-lying.

Stutts is the largest of the creeks to the south, with a marked navigation channel approximately 7' deep leading to many waterfront homes and a yacht club. Billups, Stoakes, and Whites Creeks have 3-5' depth, with extensive fringe marsh, and are generally less developed. The eastern side of Milford Haven is separated from the Bay by a series of barrier islands, shoals and sandbars. Passage through this area, known as the Hole-in-the-Wall, is marked with private aids to navigation (PATONs) maintained by Mathews County.

Milford Haven is a busy waterway. Several seafood docks offer landing space for commercial watermen, and numerous marinas & public access points cater to recreational boaters. The U.S. Coast Guard maintains a station on the southern shore just east of the bridge. One of the largest oyster hatcheries in Virginia is located at Callis's Wharf on Gwynn's Island, and draws water from the Haven for its operations.



From NOAA Chart 12235

Public access points include Grimstead Landing, Edwards Creek Landing and Whites Creek Landing. Private marina facilities are located in the Narrows, on Milford Haven and in Stutts Creek.



Mathews County Public Water Access Guide

Grimstead Public Landing

384 Old Ferry Road



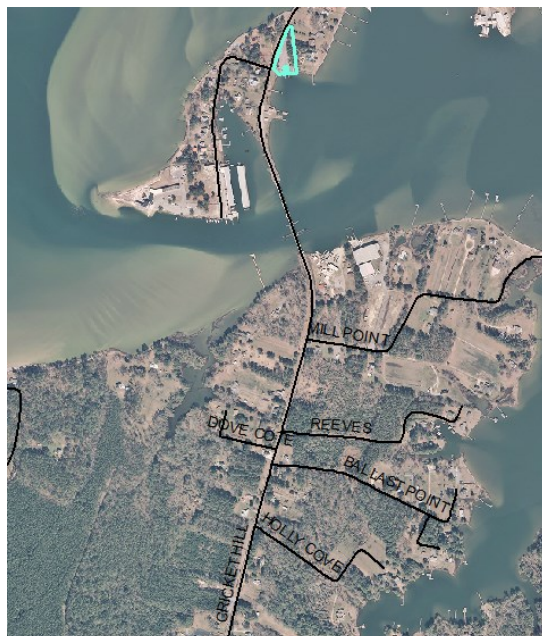
Waterway: Milford Haven

Ownership: County of Mathews

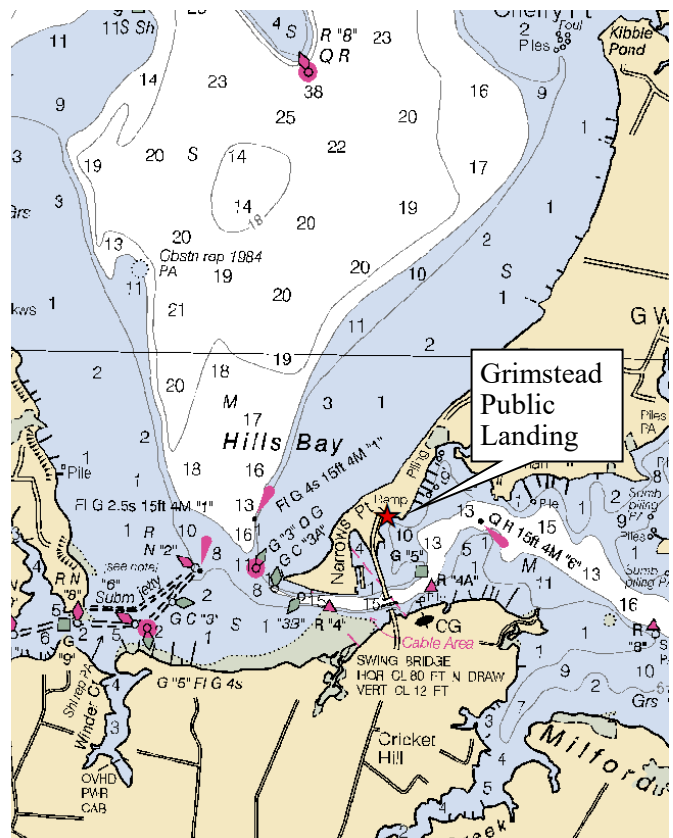
37.4923991 N 76.3100095W

Amenities:

- Concrete launching ramp with tendring pier & four transient boat slips
- Asphalt parking area



Directions: From Courthouse, head west on Route 198. Take a right on Cricket Hill Road, Route 223. Follow over the bridge at the Narrows. The landing is on the right, about 0.2 miles after the bridge.





Mathews County Public Water Access Guide

Edwards Creek Landing

100 Edwards Landing Road



Waterway: Edwards Creek (tributary to Milford Haven)

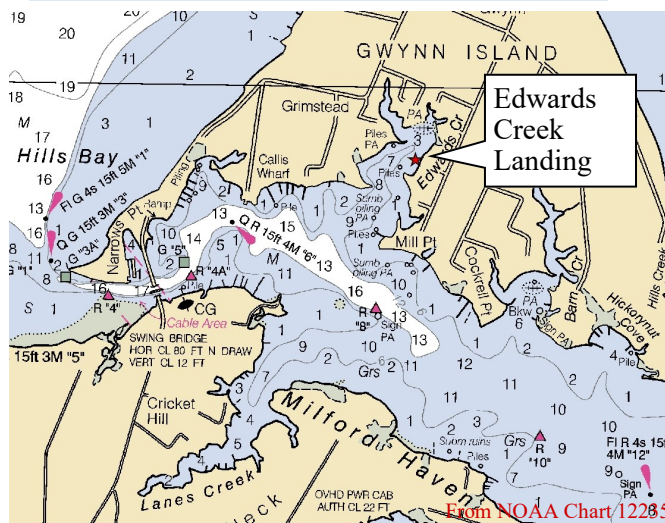
Ownership: County of Mathews

Directions: From Courthouse, go west on Route 198, take a right on Cricket Hill Rd (Rte. 223). Go across the bridge and continue on Old Ferry Rd (Rte. 633). Take a right onto S Bay Haven Dr (Rte. 636) and take a right onto Edwards Landing Rd (Rte. 672). Proceed to the end.

Amenities

- 130' x 12' pier with a 32' x 24' T-head
- 5' at mean low water at the end of the pier
- Very limited parking at the end of Edwards Landing Road
- No launch facilities or trailer turnaround
- Provides access to Milford Haven

37.2945192N 76.172871W





Mathews County Public Water Access Guide

Whites Creek Landing 822 Whites Creek Lane



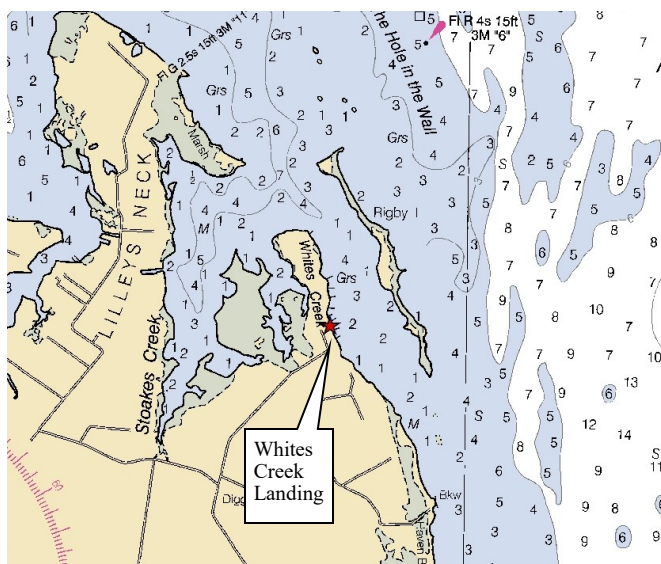
Waterway: Whites Creek

Ownership: County of Mathews

Amenities

- 200' x 5' pier with 20' x 12' L-head
- Sandy turnaround with parking for several cars or 1-2 cars & trailers
- Small sandy ramp for launching canoes, kayaks, and small skiffs

37.2649099N 76.1537419W





Mathews County Public Water Access Guide

Chesapeake Bay
Garden Creek, Winter Harbor,
Horn Harbor, & Dyers Creek



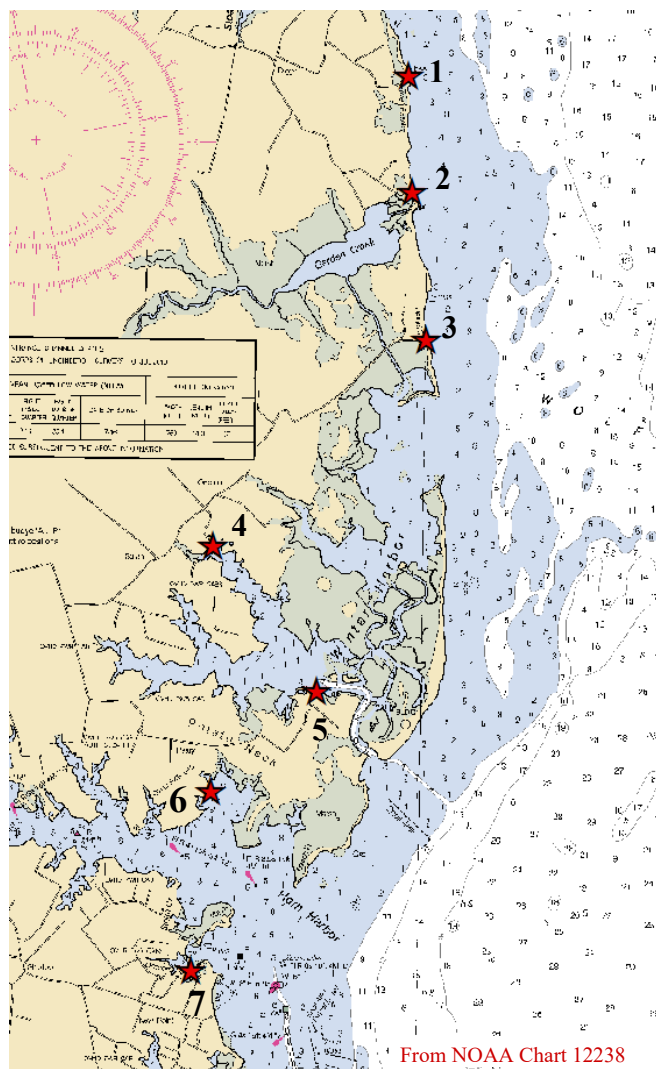
Mathews County's eastern boundary is formed by the Chesapeake Bay. It is approximately 15 miles across the Bay from Mathews to the Eastern Shore. The nearshore depth is shallow, with water less than 10' deep extending out from the shore for hundreds of yards, and nearly a mile in some places. The shoreline is mostly sandy beach interspersed with marsh inlets and creek mouths. Major tributaries from Mathews directly into the Bay include Winter Harbor & Garden Creek, Horn Harbor, and Dyers Creek. These are small shallow waterways with extensive fringe marsh and limited development. The adjacent land is low-lying and often heavily wooded.

Winter Harbor has a pair of entrances, both unmarked. The wide northern entrance is only a few decades old, resulting from a breach of the thin barrier beach. The southern entrance is narrow and although unmarked, can be navigated by an experienced boater. Small marina facilities are available in Winter Harbor for boaters. There are several kayak launch points as well.

Horn Harbor has a wide mouth with a narrow marked navigation channel bisecting a pair of shoals. Water depth throughout the harbor is less than 10'. The County has a small public access point on the north side at the end of State Route 698. Private marinas further up the creek offer slips, fuel, and vessel services.

The smallest of the bayside tributaries, Dyers Creek is unmarked and has depths of 5 feet or shallower. A substantial waterfront RV campground and marina is located on the

northern side of the entrance, and a seafood dock is found further up the creek, also on the right side.



Haven Beach(1), Aaron's Beach(2), Bethel Beach(3), Old Mill Landing(4), Winter Harbor Landing(5), Horn Harbor Landing(6), Doctor's Creek Landing(7)



Mathews County Public Water Access Guide

Haven Beach
2862 Haven Beach Rd



Waterway: Chesapeake Bay

Ownership: County of Mathews

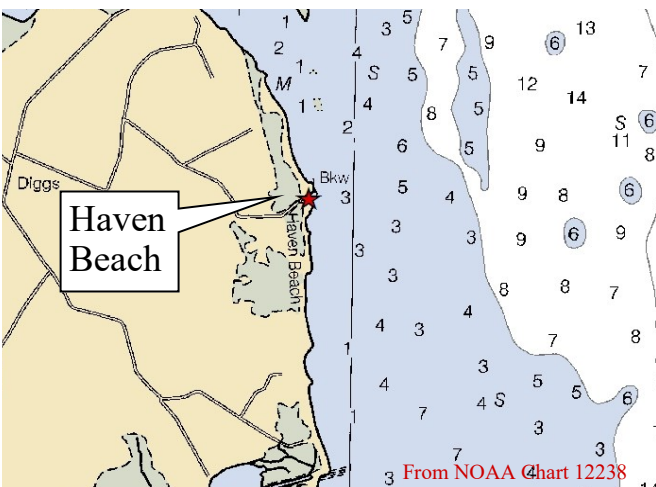
37.434949 N 76.2524805 W

Amenities

- Also known as 'Festival Beach'
- Gravel turnaround with parking for approximately 20 cars
- Sandy beach interspersed with sections of marl & salt marsh
- Provides access to the Chesapeake Bay
- Public restrooms



Directions: From Courthouse, go east on Rte 198. Buckley Hall Road becomes Haven Beach Road (Rte. 643). Follow through several curves & intersections to the very end.





Mathews County Public Water Access Guide

Aaron's Beach 1314 Aarons Beach Road



Waterway: Chesapeake Bay

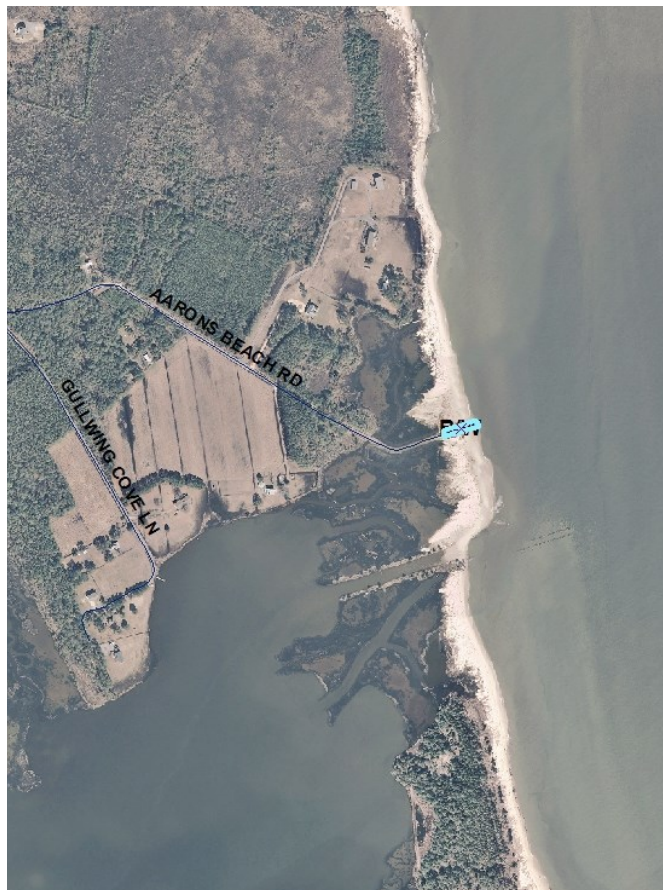
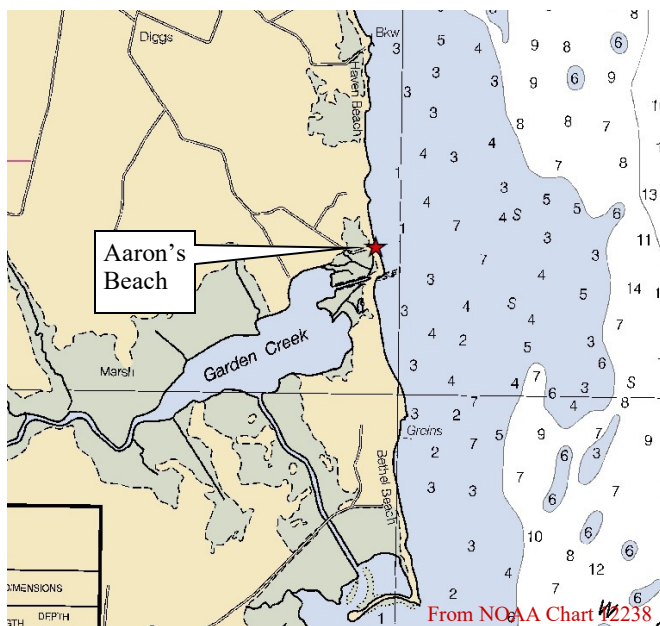
Ownership: VDOT Road Ending

37.4248195 N 76.2520232 W

Directions: From Courthouse, go east on Buckley Hall Road (Rte. 198). Buckley Hall Road turns into Haven Beach Road (Rte. 643). Take a right on Aaron's Beach Road (Rte. 644). Follow to the end.

Amenities

- Small gravel turnaround with parking for 3 or 4 vehicles
- Launching for canoes and kayaks
- Private property lies on either side of VDOT's right-of-way





Mathews County Public Water Access Guide

Bethel Beach 2 Bethel Beach Road



Waterway: Chesapeake Bay &
Winter Harbor

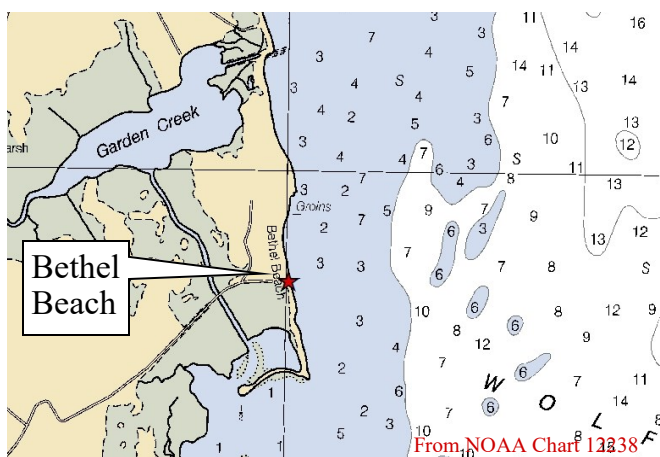
Ownership: Commonwealth of Virginia (Dept. of
Conservation & Recreation)

37.4101530 N 76.2499180 W

Directions: From Courthouse, go south on
Route 14, take a left on Hamburg Road (Rte.
608). Take a left on Bethel Beach Road (Rte.
609) and follow to the very end.

Amenities

- Small gravel turnaround with parking for 5 or 6 vehicles
- Sandy beach & extensive salt marsh
- Launching for canoes & kayaks
- Provides access to the Chesapeake Bay & Winter Harbor
- Some areas subject to closure to protect wildlife



From NOAA Chart 13338



Mathews County Public Water Access Guide

Old Mill Landing 282 Old Mill Landing



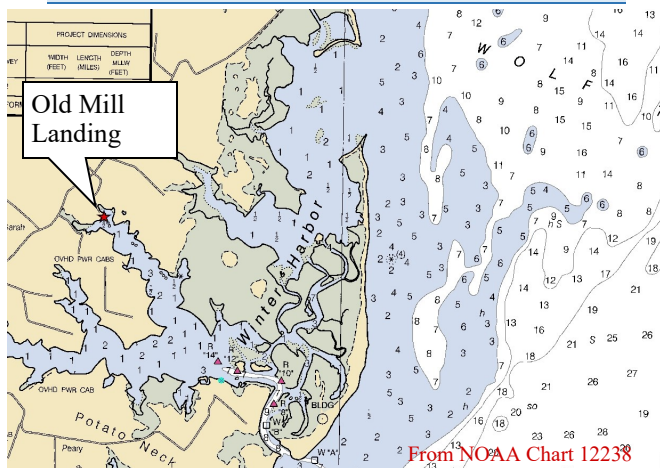
Waterway: Winter Harbor

Ownership: County of Mathews

Amenities

- 165' x 8' pier with 12' x 12' L-head
- Parking for 1-2 cars & trailers
- Provides access to Winter Harbor, a winding maze of channels through an expansive salt marsh
- Small dirt ramp for launching canoes, kayaks, and small skiffs

37.2325456N 76.1631388W



Directions: From Courthouse, go south on Route 14. Take a left on Hamburg Road (Rte. 608). Take a left on Bethel Beach Road (Rte. 609). Take a right onto Old Mill Landing (Rte. 611) and follow to the end.





Mathews County Public Water Access Guide

Winter Harbor Landing 2959 Potato Neck Road



Waterway: Winter Harbor

Ownership: County of Mathews

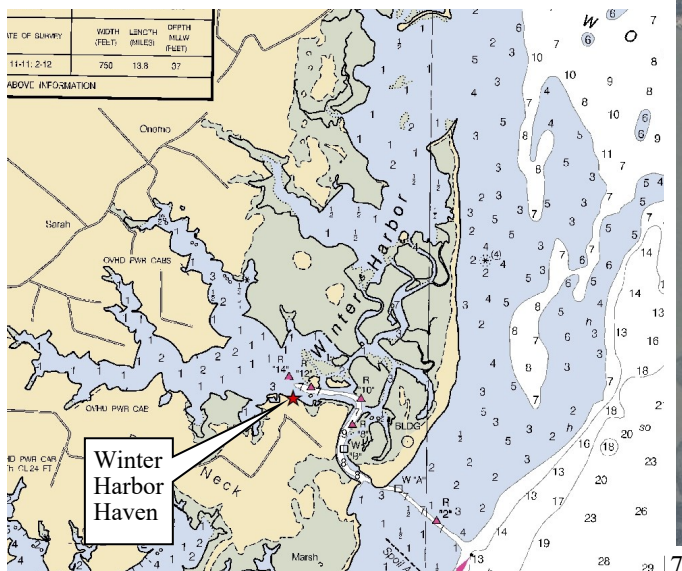
37.3766520 N 76.2625888 W

Amenities

- 150' x 16' marginal wharf
- Parking for 3-4 cars & trailers
- Small dirt ramp for launching canoes, kayaks, and small skiffs
- The site is adjacent to a private marina with a concrete ramp for larger boats. A small fee is required to use the ramp.



Directions: From Courthouse, go south on Route 14. Take a left on Hamburg Road (Rte. 608), which becomes Potato Neck Road. Follow to the very end.





Mathews County Public Water Access Guide

Horn Harbor Landing 259 Captain Genes Road



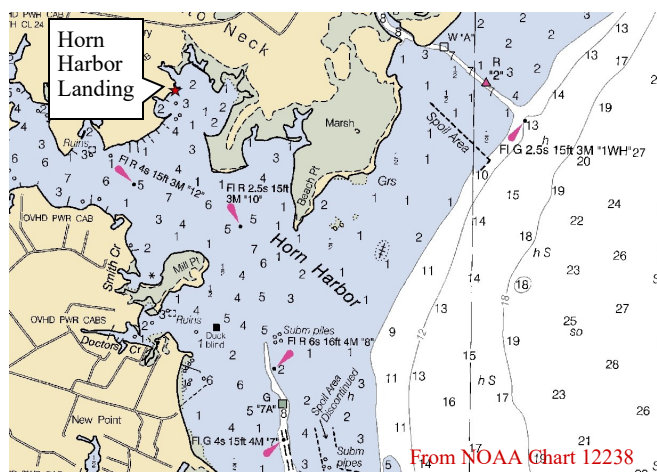
Waterway: Horn Harbor

Ownership: County of Mathews

Amenities

- Gravel turnaround with parking for 1-2 cars
- Small dirt ramp for launching canoes, kayaks, and other small craft.
- Provides access to Horn Harbor & the Chesapeake Bay

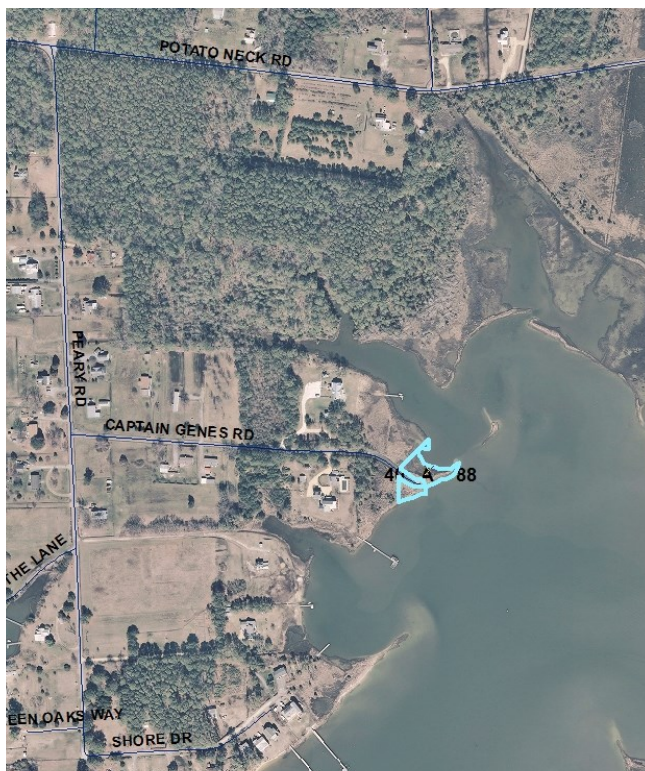
37.366944 N, 76.275378 W



From NOAA Chart 12238



Directions: From Courthouse, go south on Rte 14. Take a left on Hamburg Road (Rte. 608), which becomes Potato Neck Road. Take a right onto Peary Road (Rte. 649). Take a left on Capt. Genes Road (Rte. 698) and follow to the end.





Mathews County Public Water Access Guide

Doctors Creek Landing 410 Doctors Creek Landing



Waterway: Doctor's Creek & Horn Harbor

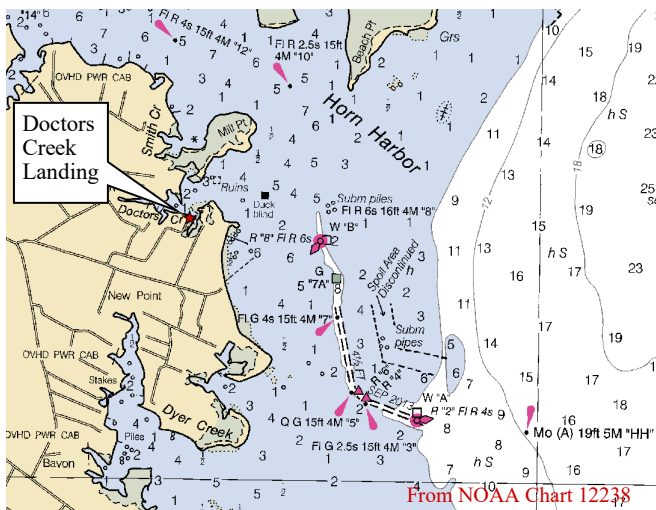
Ownership: County of Mathews

Directions: From Courthouse, go south on Rte 14. Take a left on Sandbank Road (Rte. 602). Take a left onto Heath Road (Rte. 691). Bear right on Doctors Creek Road (Rte. 699) and follow to the end.

Amenities

- Gravel turnaround with parking for 1-2 cars
- Small dirt ramp for launching canoes, kayaks, and other small craft.
- Provides access to Horn Harbor & the Chesapeake Bay

37.349558 N, 76.277203 W





Mathews County Public Water Access Guide



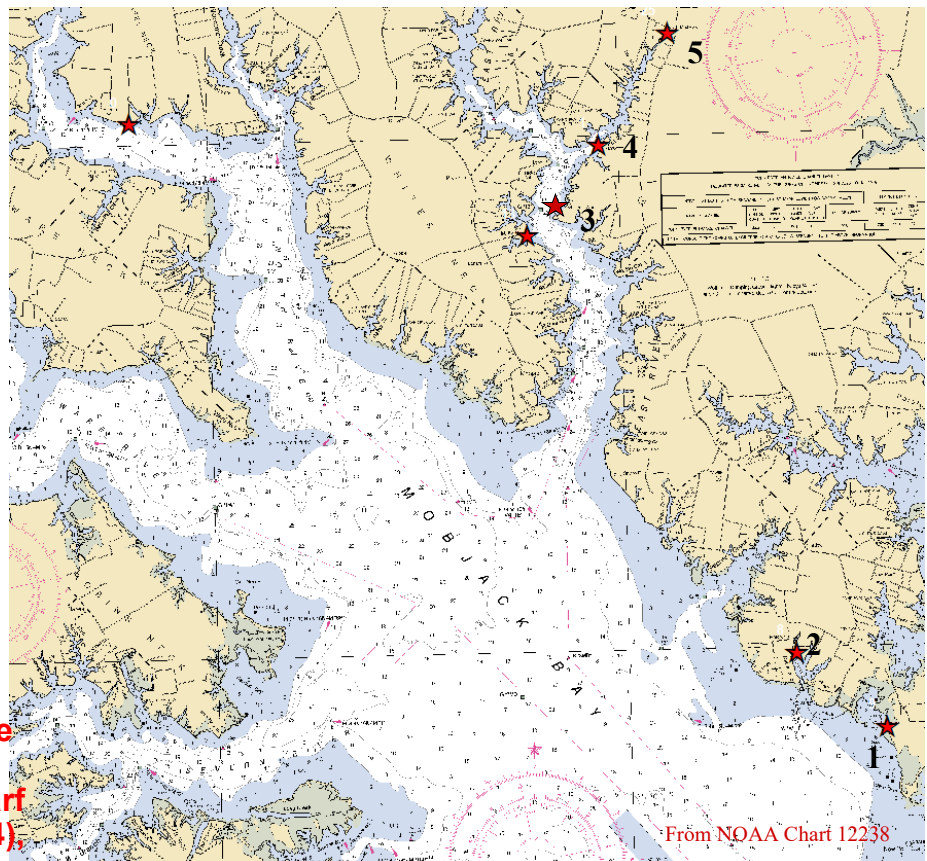
Mobjack Bay East River, North River, Davis Creek, Pepper Creek, & Blackwater Creek

Mobjack Bay is a tidal embayment off the main stem of the Chesapeake Bay, approximately 5 miles wide at the mouth between New Point Comfort in Mathews and the Guinea Marshes in Gloucester. Water depth throughout Mobjack Bay is approximately twenty feet, although there are shallow shoals extending from the shoreline up to a half mile in some places. The bottom is generally muddy or covered in seagrass beds, with less sand than the Piankatank River or the bayside of Mathews County.

Mobjack Bay is fed by four smaller tidal rivers: East River, North River, Ware River, & Severn River. Mathews County has frontage on both sides of the East River and one side of the North River. Other smaller creeks that feed Mobjack Bay include Davis Creek & Pepper Creek in the Bavon area, Put-In Creek on the East River and Blackwater Creek on the North River. The Mobjack Bay system lies within the Chesapeake Bay Impact Crater basin, and consequently the land is low-lying with extensive fringe marsh.

Public shoreline access points include the County-owned dock in Davis Creek, an improved concrete ramp at Town Point Landing on the East River, a kayak launch at Put-In Creek Park in the Courthouse and the East River Boatyard on the western shore of the East River in Bohannon. Private marina facilities are available in Davis Creek, the East River, and Blackwater Creek.

The entrance to Davis Creek is marked with County-maintained aids to navigation. The water on either side of the channel is extremely shallow, and the channel itself was surveyed in January 2021 to have depths of 2' MLLW in some places. The East River and North River have well-marked channels with at least 10' of water until you reach the upper stretches.



New Point Comfort Nature Preserve(1), Davis Creek Landing(2), Williams Wharf (3), Town Point Landing(4), Put In Creek Park(5)

From NOAA Chart 12238



Mathews County Public Water Access Guide

New Point Comfort Nature Preserve 2 Lighthouse Road



Waterway: Mobjack Bay

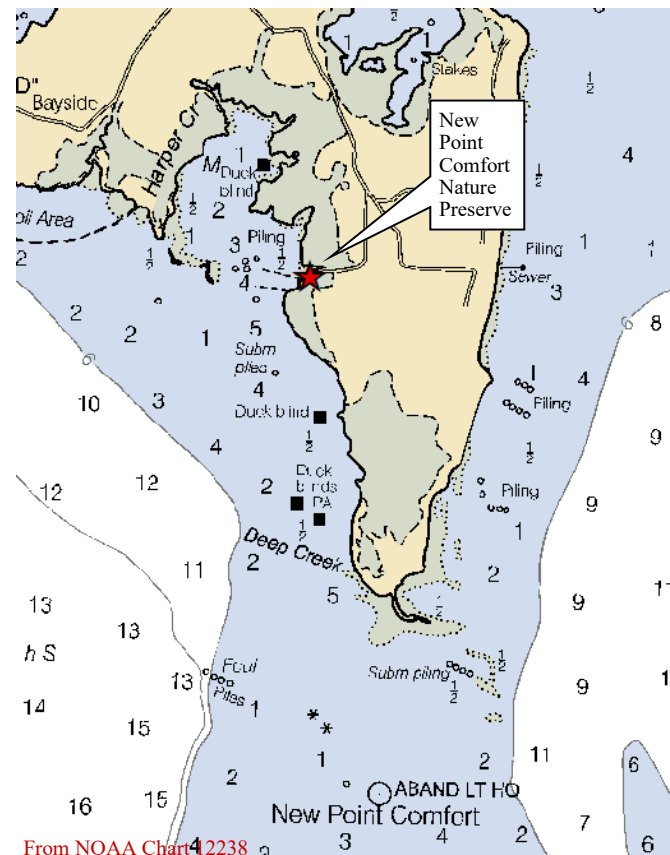
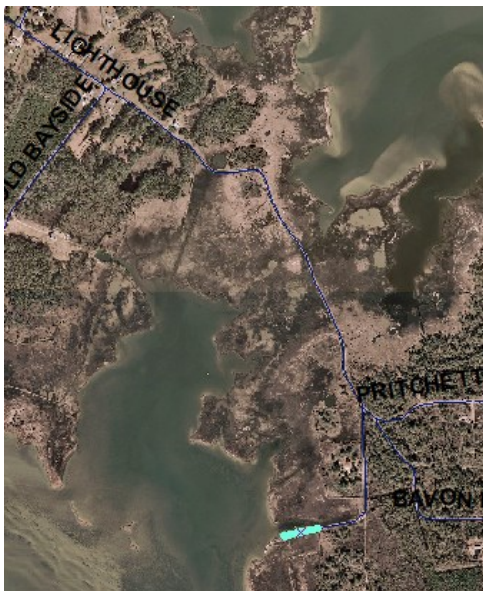
Ownership: VDOT road ending / The Nature Conservancy

37.1913188N 76.165272W

Directions: From Courthouse, go south on Route 14. Go to Bavon and take a left onto Lighthouse Road, Rte. 600. Go across the marsh and stay to the right on Lighthouse Road. Landing and turnaround is at the end.

Amenities:

- Gravel turnaround with parking for a few cars
- Small dirt ramp for launching canoes and kayaks
- Elevated observation platform for viewing scenery & wildlife



From NOAA Chart 12238



Mathews County Public Water Access Guide

Davis Creek Landing

346 Davis Creek Road



Waterway: Davis Creek
Ownership: County of Mathews

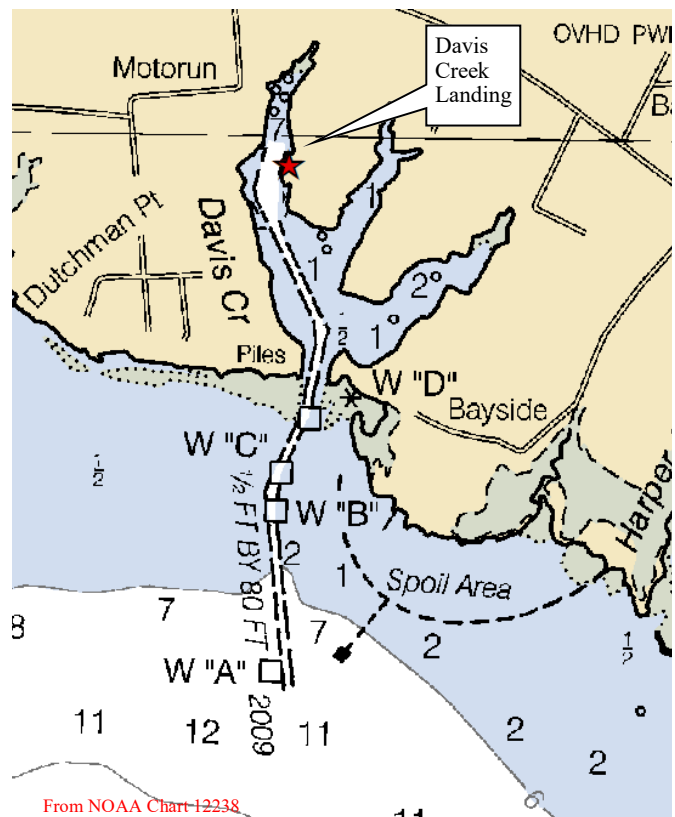
Directions: From Courthouse, go south on Rt 14, turn onto Circle Drive, Rt. 600. Turn left on Davis Creek Rd, Rt. 689 then proceed to the end.

Amenities

- Gravel turnaround with parking for a few cars
- Small area to launch kayak/canoe
- Wharf/Pier with two walkways



37.1958043N 76.1757855W





Mathews County Public Water Access Guide

Williams Wharf Landing 1039 Williams Wharf Rd



Waterway: East River
River Side: Eastern
Conditions: Fairly wide
open with some wind and wave action
at times.

Ownership: Mathews Land Conservancy

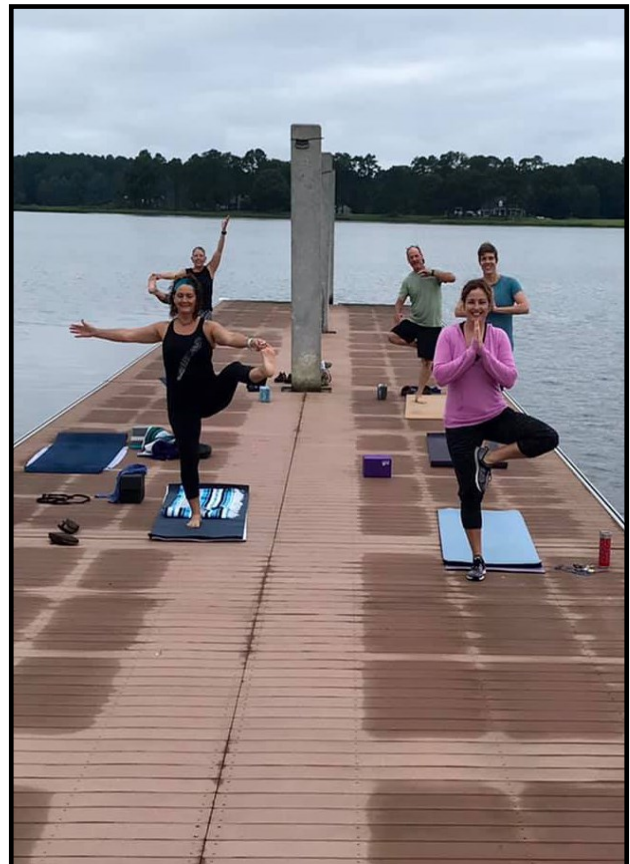
Directions: From Mathews Courthouse,
travel south on Route 14; Turn right on
Rt. 614 to end of road.

Hours: Our visitors enjoy free sunrise to
sunset public access.



Amenities:

- Fishing Pier
- A large floating dock for launching wind and hand powered vessels like small sailboats, kayaks, canoes, and paddle boards. (and sometimes Yoga)



Mathews County Public Water Access Guide

Williams Wharf Landing

1039 Williams Wharf Rd



Mathews Land Conservancy's properties are open to all people. Come enjoy the waterfronts.

Our visitors enjoy free sunrise to sunset public access.

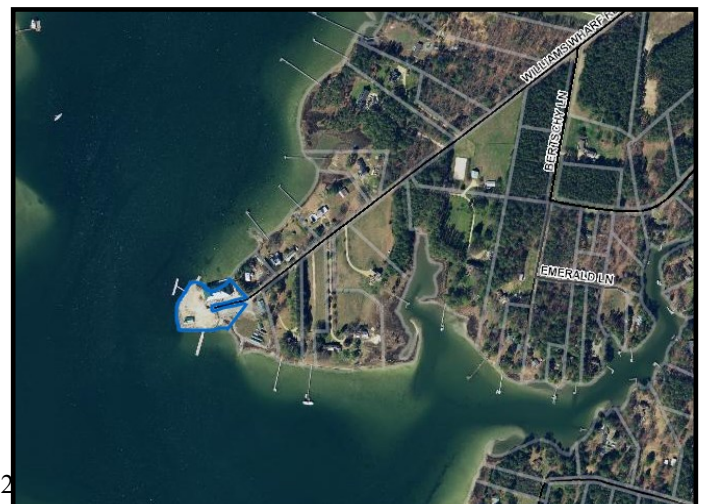
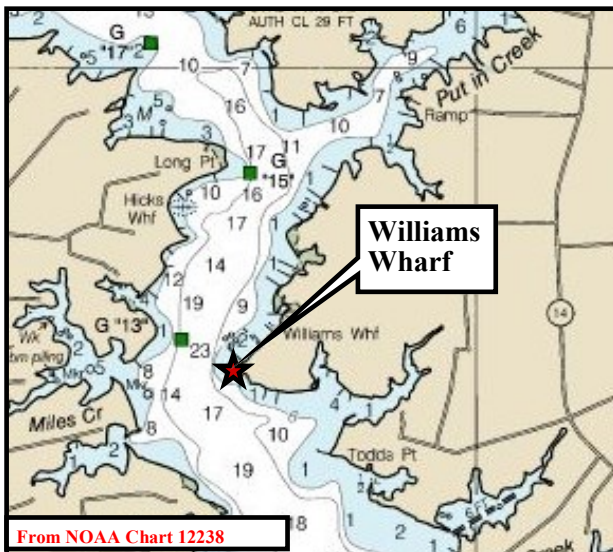
Amenities: There's fishing and crabbing, a walking trail, launching wind and paddlecraft from a large floating dock, and picnicking in a waterside pavilion.

Picnic Shelter has elevated look-out for outstanding views of the river.

WWL has free Wi-Fi.
Extensive parking area

Restrooms

Community Building





Mathews County Public Water Access Guide

Town Point Landing 501 Town Point Landing



Waterway: East River & Put-In Creek

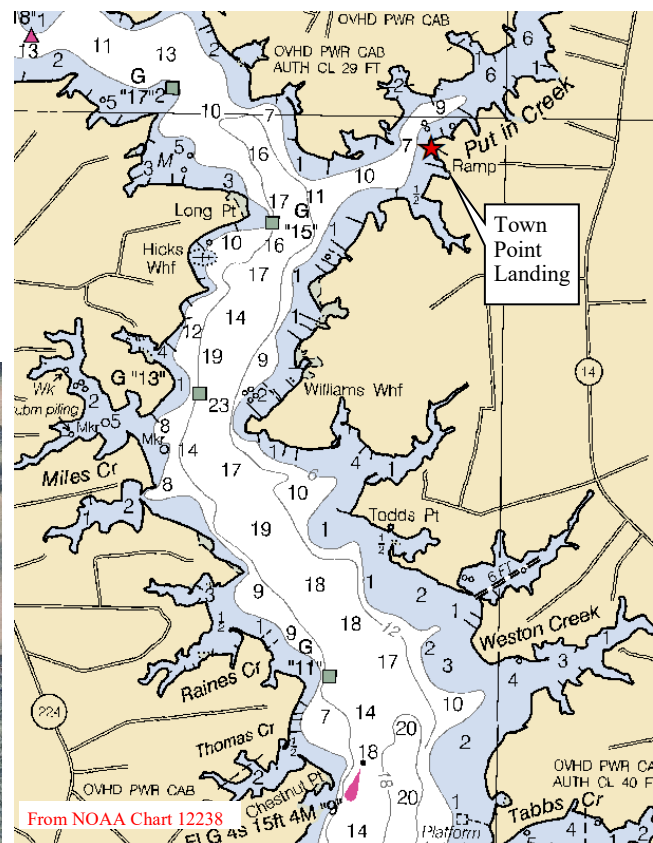
Ownership: County of Mathews,
managed by Department of Wildlife Resources

Directions: From Courthouse, go south on Route 14. Take a right on Town Point Landing (Rte. 615). Follow to the very end, approx. 1/2 mile.

Amenities

- Concrete ramp & tending pier for large trailered boats
- Small gravel kayak launch
- Gravel turnaround with parking for approximately **15** cars & trailers
- Provides access to the East River & Mob-jack Bay

37.415482N 76.337175W





Mathews County Public Water Access Guide

Put In Creek Park 89 Brickbat Road



Waterway: Put-In Creek
Ownership: County of Mathews

37.2455723N 76.2014309W

Amenities

- Pier and ADA-accessible kayak launch (Tide Dependent)
- Covered pavilion with picnic tables



Directions: Located in Courthouse area, across Brickbat Road from County Administrative Buildings.

